



M7T system **ONE**

Just one system for Remote Sensing



- REMOVABLE SSD
- INTEGRATED IMU
- GEOTIFF DATA
- VIS/NIR/TER CHANNELS
- SMART PLUG FILTER SET
- BATTERY POWERED
- 3 AXIS GIMBAL
- AI ALGORITHMS FOR TARGET DETECTION
- ON-BOARD PROCESSING N-VIDIA
- MISSION AND DATA MANAGEMENT SW

Lightweight Hyperspectral

imaging system designed for

Aviation platforms and UAVs



SUPERELECTRIC

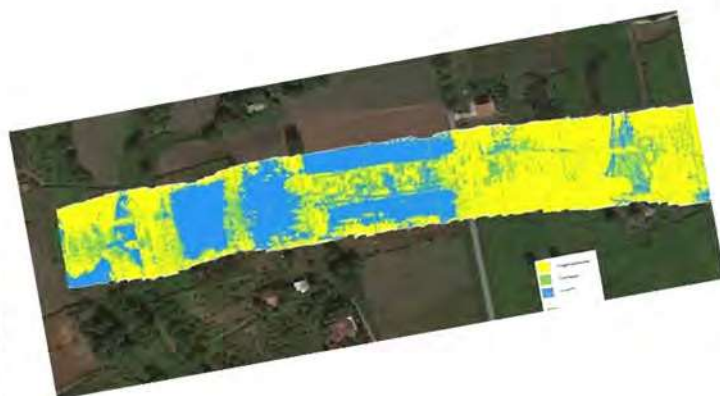


systemONE^{M7}

Just one system for Remote Sensing

systemONE-M7T is an image spectrometer operating in the VIS-NIR range with a high resolution thermal channel. With systemONE-M4T it is possible to perform rapid 3D surveys of the territory, with simultaneous generation of Multispectral, Hyperspectral and Thermal maps for Precision Agriculture, Pollution, Cultural Heritage, Critical Infrastructures and Hydrogeological instability monitoring activities. systemONE -M7T is equipped with a specific mission and data management software.

- **High Resolution Georeferenced, Multispectral, Hyperspectral and Thermal Surveys**
- **3D Territory Models**



SENSOR HEAD SPECIFICATIONS

Sensor #	Band	Frequency	FWHM	Resolution	Field of view	Bit resolution	Image acquisition rate (Max)
Sensor 1-7	VIS-NIR	Selectable in the range 400-950nm	10nm	1296x966 (up to 12MP)	24°, 30°	16 bit	3 Hz (up to 10Hz)
Sensor 5	THERMAL	7-14 μm	broadband	640x480	24°, 30°	16 bit	3Hz
OPTIONS	• IR/UV Laser Designator						

SYSTEM SPECIFICATIONS

Dimension	85(W)x270(L)x114(H)mm 3"(W)x10"(L)x4,5"(H)	Weight	1200g
Standard Interfaces	Ethernet LAN, 5,8 GHz RF Link for Telemetry	Environmental	-20° to 55° Operating Temperature
Power	12-36VDC 1,5Amps max	Data Storage	Removable SSD (Up to 4TB)
Remote control	By Remote Control Station or local by LAN interface	OPTIONS	<ul style="list-style-type: none"> • Moving Map, • On Board Processing • 3 Axis Gimbal

