

system**ONE**^{M4T}

Just one system for Remote Sensing

- REMOVABLE SSD
- BATTERY POWERED
- INTEGRATED IMU
- 3 AXIS GIMBAL
- GEOTIFF DATA
- AI ALGORITHMS FOR TARGET DETECTION
- VIS/NIR/TER CHANNELS
- ON-BOARD PROCESSING N-VIDIA
- SMART PLUG FILTER SET
- MISSION AND DATA MANAGEMENT SW

Lightweight Hyperspectral

imaging system designed for

Aviation platforms and UAVs



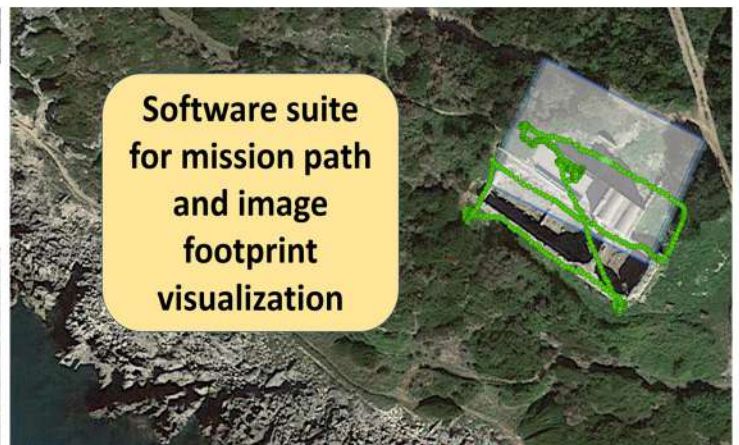
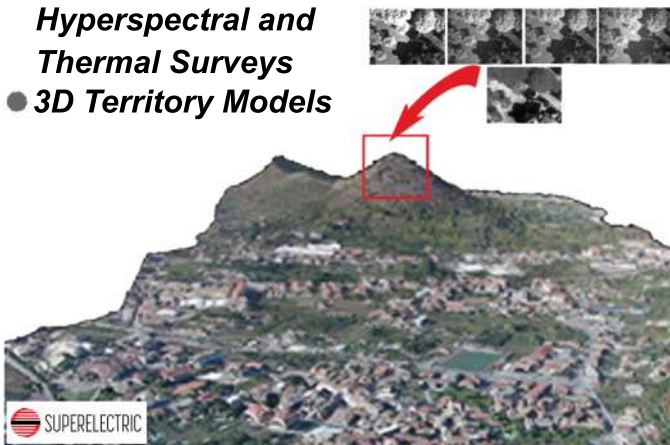
SUPERELECTRIC

systemONE

Just one system for Remote Sensing

systemONE-M4T is an image spectrometer operating in the VIS-NIR range with a high resolution thermal channel. With systemONE-M4T it is possible to perform rapid 3D surveys of the territory, with simultaneous generation of Multispectral, Hyperspectral and Thermal maps for Precision Agriculture, Pollution, Cultural Heritage, Critical Infrastructures and Hydrogeological instability monitoring activities. systemONE -M4T is equipped with a specific mission and data management software.

- **High Resolution Georeferenced, Multispectral, Hyperspectral and Thermal Surveys**
- **3D Territory Models**



SENSOR HEAD SPECIFICATIONS

Sensor #	Band	Frequency	FWHM	Resolution	Field of view	Bit resolution	Image acquisition rate (Max)
Sensor 1-4	VIS-NIR	Selectable in the range 400-950nm	10nm	1296x966	24°, 30°	16 bit	3 Hz
Sensor 5	THERMAL	7-14 μm	broadband	640x480	24°, 30°	16 bit	3Hz
OPTIONS	• IR/UV Laser Designator						

SYSTEM SPECIFICATIONS

Dimension	85(W)x270(L)x114(H)mm 3"(W)x10"(L)x4,5"(H)	Weight	890g (2lbs)
Standard Interfaces	Ethernet LAN, 5,8 GHz RF Link for Telemetry	Environmental	-20° to 55° Operating Temperature
Power	12-36VDC 1,5Amps max	Data Storage	Removable SSD (Up to 4TB)
Remote control	By Remote Control Station or local by LAN interface	OPTIONS	<ul style="list-style-type: none"> • Moving Map, • On Board Processing • 3 Axis Gimbal

For Information:
info@superelectric.it
 +39 348 26 46 077

www.superelectric.it

