

M12T

systemONE

Just one system for Remote Sensing

- BATTERY POWERED
- 3 AXIS GIMBAL
- BASE STATION SW
- CRYPTED DATA
- REMOVABLE SSD
- INTEGRATED IMU
- GEOTIFF DATA
- VIS/NIR/TER CHANNELS
- AI ALGORITHMS FOR TARGET DETECTION

**Lightweight Hyperspectral
imaging system designed for
Aviation platforms and UAVs**



SUPERELECTRIC



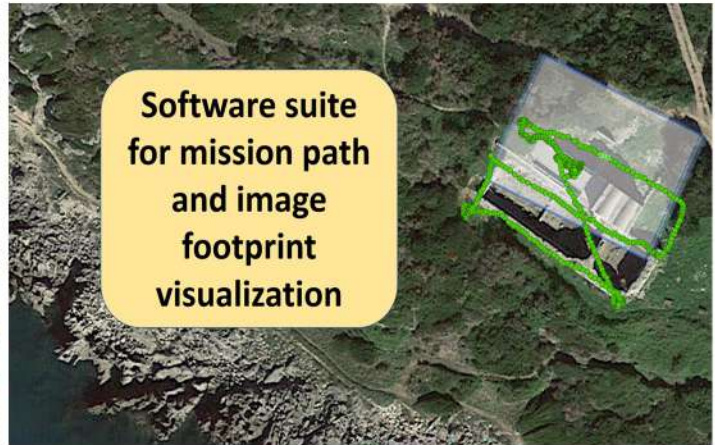
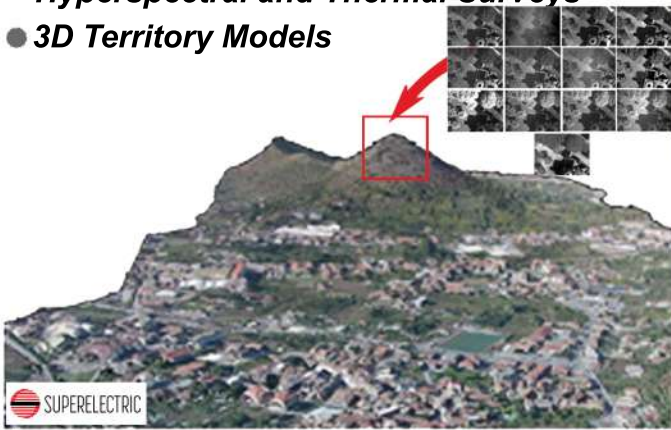
M12T

systemONE

Just one system for Remote Sensing

systemONE-M12T is an image spectrometer operating in the VIS-NIR range with a high resolution thermal channel. With systemONE-M12T it is possible to perform rapid 3D surveys of the territory, with simultaneous generation of Multispectral, Hyperspectral and Thermal maps for Precision Agriculture, Pollution, Cultural Heritage, Critical Infrastructures and Hydrogeological instability monitoring activities. systemONE-M12T is equipped with a specific mission and data management software.

- **High Resolution Georeferenced, Multispectral, Hyperspectral and Thermal Surveys**
- **3D Territory Models**



SENSOR HEAD SPECIFICATIONS

Sensor #	Band	Frequency	FWHM	Resolution	Field of view	Bit resolution	Image acquisition rate (Max)
Sensor 1-12	VIS-NIR	Selectable in the range 400-950nm	10nm	1296x966	24°, 30°	16 bit	3 Hz
Sensor 13	THERMAL	7-14 μm	broadband	640x480	24°, 30°	16 bit	3Hz
Sensor 14	COLOR	RGB		4000x3000	170°	24 bit	3 Hz

OPTIONS • IR/UV Laser Designator

SYSTEM SPECIFICATIONS

Dimension	182(W)x226(L)x114(H)mm 7,1"(W)x8,5"(L)x4,5"(H)	Weight	1850g (4lbs)
Standard Interfaces	Ethernet LAN, 5,8 GHz RF Link for Telemetry	Environmental	-20° to 55° Operating Temperature
Power	12-36VDC 3Amps max	Data Storage	Removable SSD (Up to 3TB)
Remote control	By Remote Control Station or local by LAN interface	OPTIONS	<ul style="list-style-type: none"> • Moving Map, • On Board Processing Unit N-Vidia • 3 Axis Gimbal

For Information:
info@superelectric.it
 +39 348 26 46 077

www.superelectric.it



SUPERELECTRIC