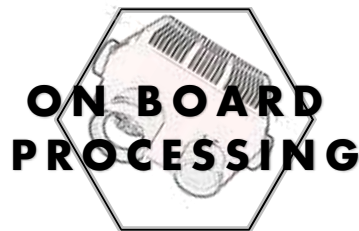
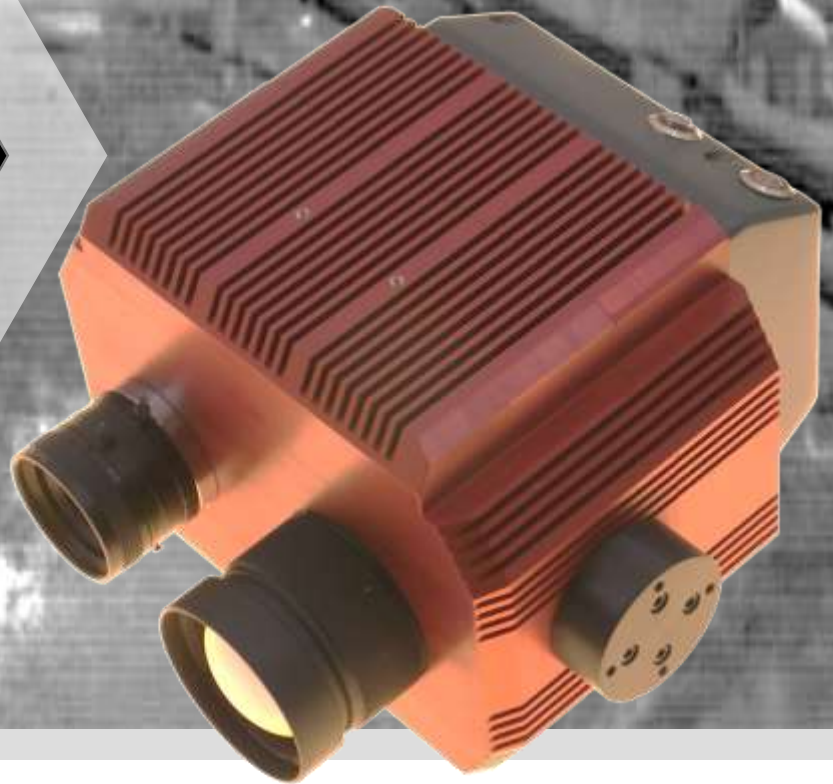


# DCS - HP

The Visible – Thermal  
sensor



DCS is a configurable dual camera high performance THERMAL - VISIBLE sensor designed for an easy integration in Electro Optics systems.

Based on a multicore architecture and an integrated IMU, DCS is perfect for the implementation of dual band AI based applications like object detection, pointing and tracking.

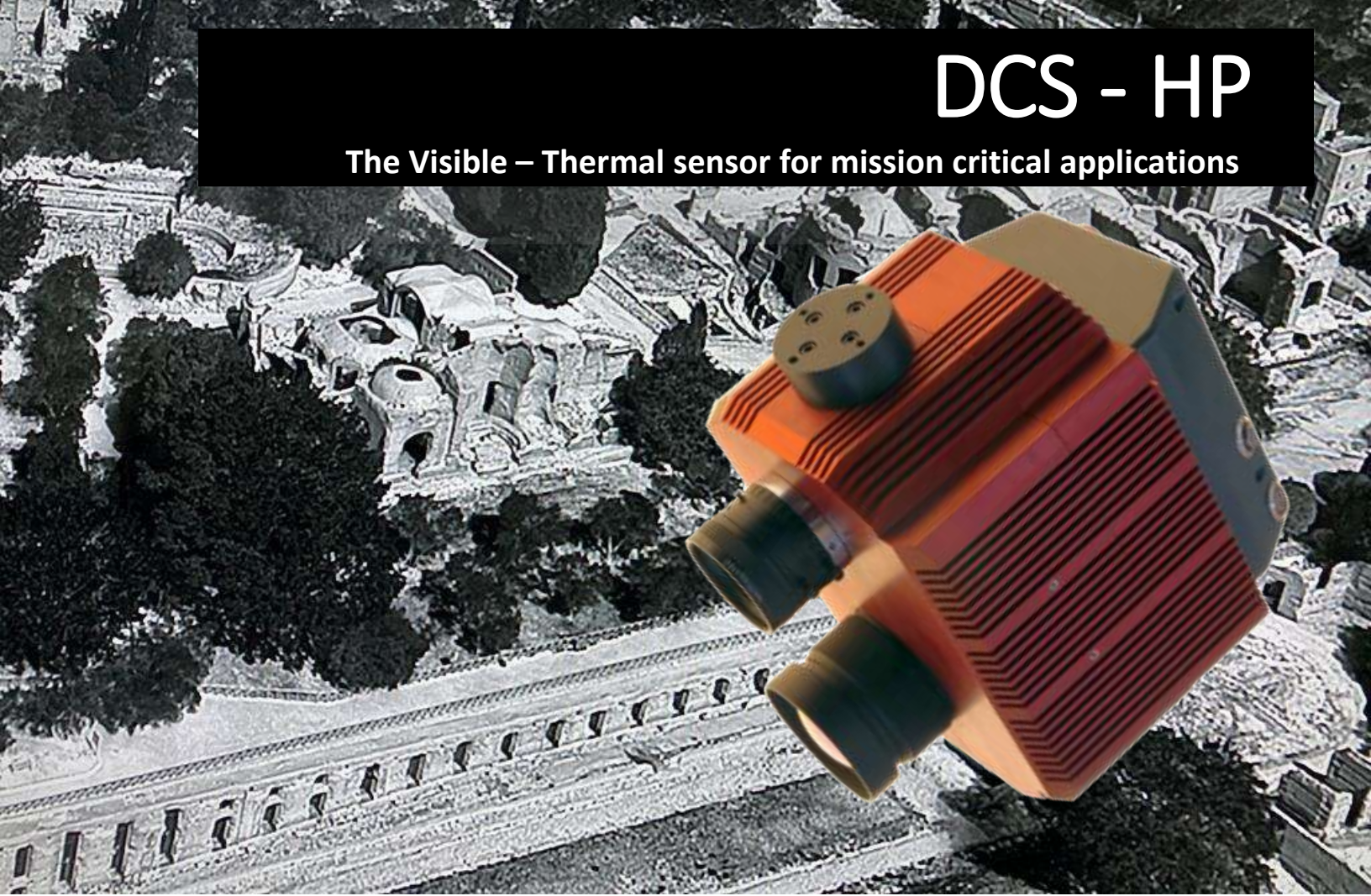
Both Thermal and Visible sensors can be customized for specific user needs.

Synchronous acquisitions with external devices are guaranteed by HW trigger channels.



# DCS - HP

The Visible – Thermal sensor for mission critical applications



### Integrated IMU

Inertial Unit, GPS, Barometer and Magnetometer for precision position and attitude



### AI

Artificial Intelligence libraries for specific applications



### On Board Processing

Multicore on board GPU for real time needs



### Data Recording

Recording of image and ancillary data on Solid State memory



### Dual Sensor

High Performance Thermal and Visible Sensors



### Image Fusion

Thermal and Visible image fusion



### Custom Optics and ZOOM

Optics can be customized for both channels



### Remote Control

Fully controlled by remote links

WEIGHT	THERMAL SENSOR	THERMAL SENSOR ZOOM OPTION	VISIBLE SENSOR	VISIBLE SENSOR ZOOM OPTION	ON BOARD STORAGE	POWER SUPPLY
1,3 Kg	1280x768	1280x1084 video	5Mp	4K video	4Tb	12- VDC
(no lens)	16 bit	10X	16 bit	20x		20 W
	50Hz		50Hz			

90 mm



120 mm

150 mm

Ver. 1\_1\_2023

